

km 0+007,476
h TS = 370,379 m

km 0+000,000
h TS = 370,566 m

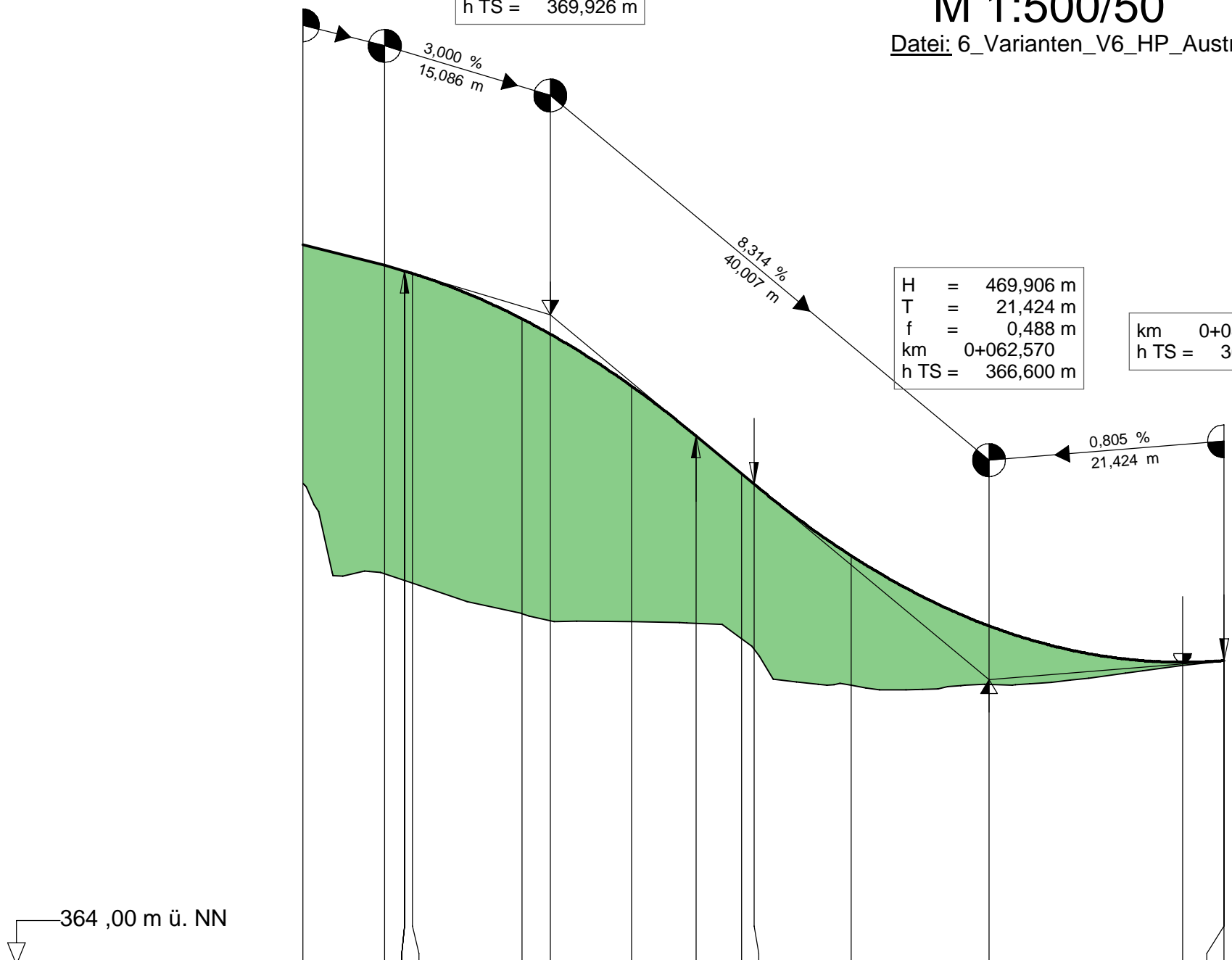
H = -500,000 m
T = 13,285 m
f = -0,176 m
km 0+022,562
h TS = 369,926 m

Variante V6 Austraße M 1:500/50

Datei: 6_Varianten_V6_HP_Austraße.pdf

H = 469,906 m
T = 21,424 m
f = 0,488 m
km 0+062,570
h TS = 366,600 m

km 0+083,994
h TS = 366,773 m



Gradientenhöhe	370,566	370,379	370,325	370,303	369,888	369,750	369,274	368,822	368,477	368,381	367,729	367,089	366,757	366,773	366,773
Geländehöhe	368,39			367,48	367,20		367,13		366,97		366,55				
Station	0,000	7,476	9,277	10,000	20,000	22,562	30,000	35,847	40,000	41,146	50,000	62,570	80,213	83,993	83,994

Bau-km 0+000

